

JOIN OUR
PEDIATRIC CARDIOLOGY

TEAM IN
LOUISVILLE, KENTUCKY



“WE HAVE A VERY COMPREHENSIVE AND EXPERIENCED TEAM THAT CAN TAKE CARE OF THE MOST COMPLEX HEART DEFECTS IN CHILDREN WITHOUT ANY EXCEPTION”

— BAAHALDIN ALSOUFI, M.D.
Chief, Pediatric Cardiothoracic Surgery



NORTON
Children's
Heart Institute

Affiliated with  SCHOOL OF MEDICINE

CAREER OPPORTUNITY FOR PEDIATRIC CARDIOLOGIST AS MEDICAL DIRECTOR OF ECHOCARDIOGRAPHY

NORTON CHILDREN'S HEART INSTITUTE, affiliated with the UofL School of Medicine, and a part of Norton Children's Medical Group, is seeking a board-certified pediatric cardiologist to serve as medical director of echocardiography, with an academic role at the assistant or associate professor level.

The candidate will join a full-service program featuring a specialized team made up of 35 pediatric cardiology specialists, including three pediatric cardiovascular surgeons. Our cardiologists have expertise in pediatric cardiology, heart failure and transplantation, adult congenital heart disease (ACHD), adult congenital and pediatric interventional cardiology, cardiac imaging, fetal cardiology, telemedicine, and pediatric and adult electrophysiology. Additionally, we have designated anesthesiologists for cardiac procedures and a specialized critical care team.

To discuss this opportunity, contact Brittany Brohm, senior recruiter, physicians, Norton Children's Medical Group, at brittany.brohm@nortonhealthcare.org or **(502) 777-6533**. See all of our career opportunities at **BeANortonDoctor.com**.

ABOUT THE POSITION

- Join a team providing full-service congenital heart disease care, including complex neonatal surgery, pediatric ventricular assist device and heart transplant, catheterization and electrophysiology labs.
- ACHD Accredited Comprehensive Care Center by the Adult Congenital Heart Association
- A growing practice of 20 cardiologists, 10 advanced practice providers and other specially trained cardiac staff
- A busy clinical practice performing over 10,000 echocardiograms a year, including:
 - 3,500 inpatient echocardiograms
 - 2,800 tele-echocardiograms
 - 900 fetal echocardiograms
 - 200 transesophageal echocardiograms (TEEs)
- Echocardiography laboratory is accredited in pediatric transthoracic, pediatric TEE and fetal echocardiography by the Intersocietal Accreditation Commission
- Established quality assurance processes following quality metrics from the American College of Cardiology Adult Congenital & Pediatric Cardiology Quality Network (QNet)
- The institute participates in numerous national registries and collaboratives, including the Society of Thoracic Surgeons, Congenital Heart Surgeons Society, Pediatric Cardiac Critical Care Consortium (PC⁴), and National Pediatric Cardiology-Quality Improvement Collaborative
 - Leadership role as medical director of echocardiography with dedicated time and support
 - Ideal candidate has at least four years of experience and demonstrated excellence in echocardiography as well as outstanding leadership skills
 - Academic position as an assistant or associate professor of pediatrics at the University of Louisville School of Medicine
 - Research opportunities with resources available through Norton Children's Research Institute, affiliated with the UofL School of Medicine

REQUIREMENTS

- Medical degree/diploma
- Board certified/board eligible
- Residency/fellowship certification

MEET THE LEADERSHIP TEAM



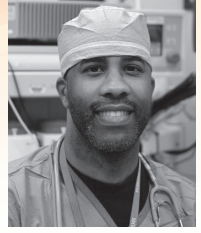
Bahaaldin Alsoufi, M.D.
Chief
Pediatric Cardiac
Surgery



Brian J. Holland, M.D.
Chief
Pediatric Cardiology



**Deanna R. Todd
Tzanetos, M.D.**
Pediatric Critical Care
Medicine



Ryan D. Swain, M.D.
Pediatric Anesthesiology

ABOUT NORTON CHILDREN'S MEDICAL GROUP

Employs more than

500
pediatric specialty
and **primary care**
providers



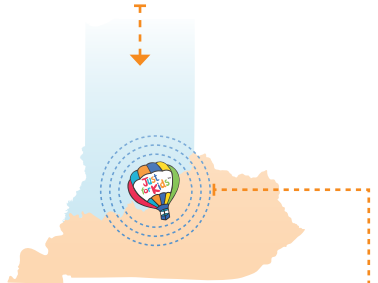
Physician-led
medical group



Affiliated with the
UL **SCHOOL OF
MEDICINE**



PROVIDERS
have access to
University of Louisville's
clinical research and
teaching opportunities



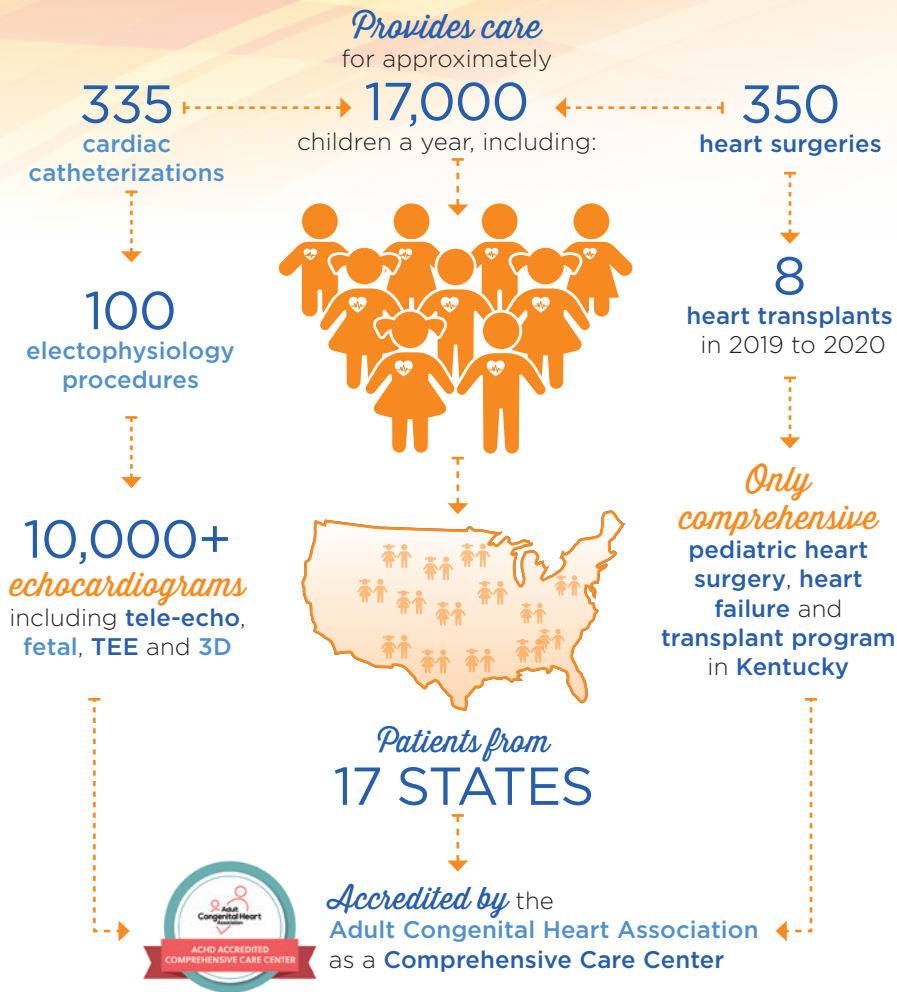
Over
170
locations in **Kentucky** and
Southern Indiana



Scan the QR code with your
smartphone's camera to
watch a video about Norton
Children's Medical Group.



ABOUT NORTON CHILDREN'S HEART INSTITUTE

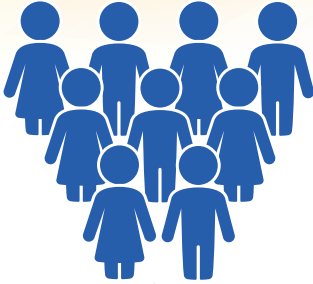


WHY NORTON CHILDREN'S FOR YOUR CAREER?

- Integrated academic clinical care model focused on translating clinical research to state-of-the-art bedside care
- Market share leader in the region
- Strong history rooted in robust training programs for medical students, residents and fellows
- Named 2021's Top Workplace in the region by the Louisville Courier-Journal
- Named No. 10 on Healthiest Employers' 2021 list of Healthiest 100 Workplaces in America and the No. 1 extra-large employer in Kentucky

ABOUT NORTON CHILDREN'S

Serves more than
200,000
patients each year



with *nearly*
1 MILLION
patient visits
ANNUALLY

Over
170

clinical research studies

- **Two hospitals, a medical center, regional outpatient centers, and primary and specialty care physician practices**

Norton Children's Hospital

- **300 beds**; region's only full-service, free-standing pediatric hospital
- **Level I Pediatric Trauma Center**
- **One of the nation's largest Level IV NICUs**



Norton Children's
Hospital



Norton Women's &
Children's Hospital



Norton Children's
Medical Center



Novak Center for
Children's Health



NORTON
Children's
Heart Institute

Affiliated with **U OF** SCHOOL OF
MEDICINE